



Bradley Lane

Holt, Trowbridge BA14 6QE

- No Chain
- Generous Garden
- Popular Village of Holt
- Green Space Behind
- Garage and Ample Parking
- Three Bedroom Detached Bungalow

£475,000 Freehold



Porch

Window to side and front elevation with door leading to hallway.

Hall

Window and door into porch, airing cupboard, radiator, doors leading to living room, kitchen/diner, bedrooms and bathroom.

Living Room

12'0" x 17'2"

Window to front elevation and radiator.

Kitchen/Diner

11'2" x 17'2"

Fitted with a range of base and eye level units with worktop space over, stainless steel sink, space for fridge/freezer, washing machine and cooker, window to rear and side elevation, radiator and door leading to lean-to.



Lean-to

7'11" x 14'8"

Windows to side elevation and rear elevation with door leading to garden.

Conservatory

7'4" x 9'9"

Windows to rear elevation side elevations with double door leading to garden.

Bedroom One

10'11" x 13'0"

Built-in wardrobes, radiator and double doors leading to conservatory.

Bedroom Two

10'11" x 12'11"

Window to front elevation and radiator.

Bedroom Three

6'11" x 12'11"

Window to side elevation and radiator.

Bathroom

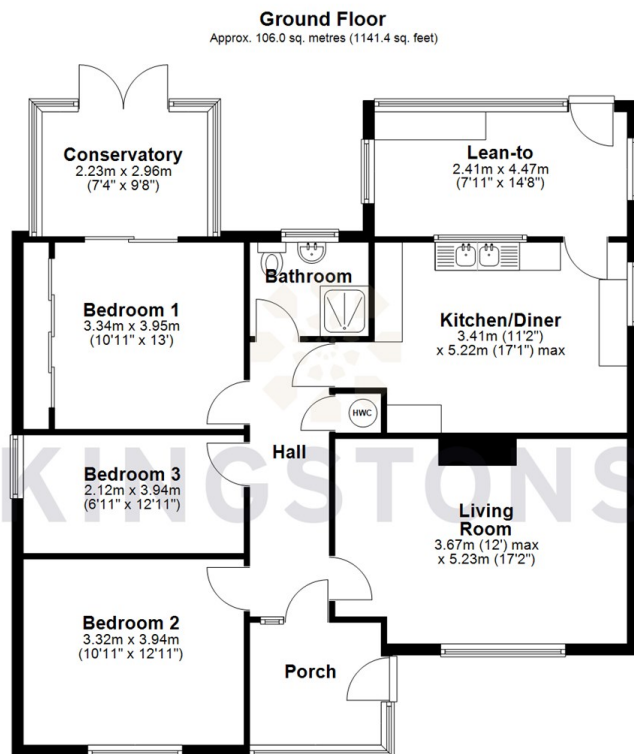
Fitted with three piece suite comprising with shower enclosure, wash hand basin and WC, window to rear elevation and heated towel rail.

Outside

Garage with up and over door and rear pedestrian door. Ample parking and good size enclosed garden with side access.



Local Authority **Wiltshire**
Council Tax Band **D**
EPC Rating **D**



Total area: approx. 106.0 sq. metres (1141.4 sq. feet)




KINGSTONS
Melksham Office

11 High Street, Melksham,
Wiltshire, SN12 6JR

Contact

01225709115
sales@kingstons.biz
www.kingstons.biz

Agents Note: Whilst every care has been taken to prepare these particulars, they are for guidance purposes only. All measurements are approximate and for general guidance purposes only and whilst every care has been taken to ensure accuracy, they should not be relied upon and potential buyers/tenants are advised to recheck the measurements.